

**SOCIOLOGY H188A:
Honors Research and Thesis**
Fall 2022

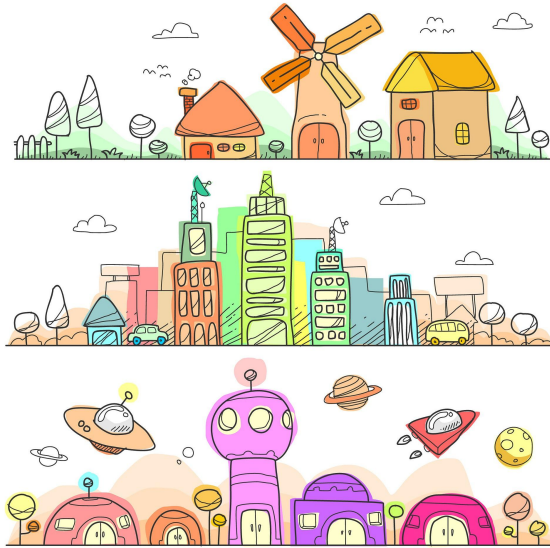


Table of Contents

Contact Information, Class Time/Place, and Student Drop-In Hours	2
Important Notes	2
Course Description and Objectives	3
Required Materials	3
Grading and Assignments	3
Class Policies and Expectations of Students	5
Resources to Help You Succeed	6
Frequently Asked Questions	8
Course Schedule	8

If you're looking at this syllabus online, you can click the headers above, then click the blue hyperlink to go directly to that section.

Contact Information, Class Time/Place, and Student Drop-In Hours

Instructor: Professor Emily K. Carian, cariane@uci.edu

Teaching Assistant (TA):

- Alexis Jenson, ajenson@uci.edu

Class Time/Place: Mondays, Wednesdays, and Fridays 10-10:50am in SBSG 1321

Student Drop-In Hours:

- Professor Carian: Wednesdays 3-4pm on [Zoom](#) and Fridays 11am-12pm in SSPB 4231
- Alexis: Tuesdays 1-3pm on [Zoom](#) and Wednesdays 11am-12pm in SSPB 2262

Important Notes

COVID-19

My first priority is your health. To protect our class, do not attend class if you are sick, think you might be sick, or think you might have been exposed to COVID. There are no exceptions to this rule. You will not be penalized for missing class due to illness. **Please do your part to keep us all safe and healthy by staying home if you are sick.**

As of this writing, face coverings are recommended indoors. **I request that you wear a mask in class and office hours to protect your classmates and the instructional team.**

Tips for Succeeding in This Class

- **Come to class prepared!** Complete the assigned readings and be prepared to talk about them. Take notes or write down questions as you read. When you are required to bring something (a source, some writing, etc) to class, make sure you do so. Check the course schedule (below) to know exactly what you need to do before class.
- **Ask questions!** When you don't understand something, ask in class or talk with a classmate, TA, or Professor Carian about it. We always want to see you in student drop-in hours.
- **Take charge of your research project!** Your success over the course of this year relies on you being able to complete work independently. You will have help—from me, your TA, your advisor, your classmates—but you are ultimately responsible for completing this research project. Create a plan for your project and stay accountable to it.
- **Work together!** Doing research doesn't have to be lonely. In this class, you will be organized into small groups based on your research interests. While everyone must complete their own work, helping each other is encouraged. This can take the form of checking in with each other on your progress, sharing helpful citations, reading each others' drafts, and more.
- **Be curious about Sociology!** Make connections between what we learn in class and your own life. Discuss career options with your TA or Professor Carian.

Course Description and Objectives

Sociology is the scientific study of how society is formed and operates, and how society and the individual are connected. Sociologists ask questions about the social world, rather than about individual personality or behavior (as psychologists do), the body or nature (as biologists do), or the structure and laws of physical matter (as chemists and physicists do). This course is the first step in a year-long process; by the end of the year, you will have answered your own sociological research question through an independent research project, and will have communicated your findings in the form of a paper. This quarter, you'll identify a research question that interests you, conduct a literature review of related research, design your study, and make a plan to conduct your study during the winter quarter.

Upon successful completion of this course, you will be able to:

- Synthesize sociological research
- Articulate a sociological research question
- Design a sociological research study
- Communicate your research design through writing
- Revise your writing
- Provide constructive feedback on others' writing

Required Materials

There is no required textbook for this class. We will make use of the Canvas site for posting required readings, turning in assignments, keeping track of grades, and making announcements. Please make sure you are able to access Canvas and check the site frequently.

We will also be using the messaging platform Slack. Slack will allow us to communicate with each other and share resources quickly. You can download the Slack app (there's a mobile and desktop version), or you can run Slack through your web browser. You can join our Slack workspace by going to

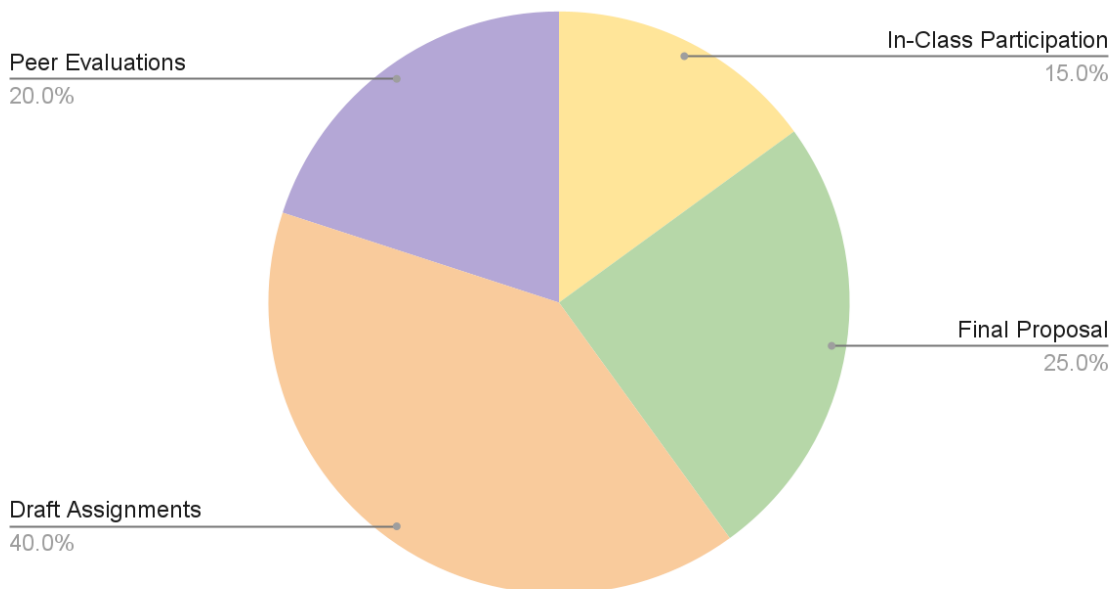
https://join.slack.com/t/sociologyhono-fl31737/shared_invite/zt-1fy4rmtty-cNPiLEF2Fw8YYTxVSfNXig

Grading and Assignments

You will be graded according to the following scale:

A = 93% and higher	C = 73-76%
A- = 90-92%	C- = 70-72%
B+ = 87-89%	D+ = 67-69%
B = 83-86%	D = 63-66%
B- = 80-82%	D- = 59-62%
C+ = 77-79%	F = 58% and lower

Your grade is based on...



In-Class Participation (15%):

This grade will be based on your attendance and your active participation in class. You are able to miss three classes with no penalty to your grade.

Final Proposal (25%):

At the end of the quarter, you will turn in a final research proposal consisting of an introduction, literature review, proposed data and methods, and plan for the winter quarter. [Detailed instructions for the final proposal can be found here.](#) The final proposal is due on December 5 at 12:30pm on Canvas.

Draft Assignments (40%):

To facilitate your completion of the final proposal, you will turn in draft sections for feedback from your peers and from Professor Carian and the TA. Feedback will be based on the requirements and rubric outlined in [the research proposal instructions](#). It is expected that you will incorporate this feedback into your final proposal. Draft assignments are graded based on completion. All draft assignments should be turned in via Canvas.

Peer Evaluations (20%):

Before you turn in your draft sections to Professor Carian and the TA, you will also receive feedback from your classmates. Your grade for the peer evaluations will be based on the quality of your feedback to your classmate. It is expected that you incorporate your classmate's feedback before turning in your draft assignments to Professor Carian and the TA. Peer evaluations will be completed on Canvas.

Class Policies and Expectations of Students

Complete Your Own Work:

For assignments designated as independent work (most assignments in this class), I expect every student to complete their own work. Cheating and plagiarizing (claiming credit for someone else's ideas or words) are against [UCI's Academic Integrity Policy](#). Cheating and plagiarizing will reduce how much you learn and will earn you a failing grade in this class. Violations of academic integrity will be referred to the Office of Academic Integrity and Student Conduct.

Plagiarizing can be accidental, so be careful to avoid it! One common form of plagiarizing is taking a phrase or sentence someone else wrote (for example, from a textbook or website) and pretending it is your own. To avoid this, put the phrase or sentence in quotation marks ("...") and say who wrote it (in other words, cite it appropriately). To avoid plagiarizing, always use your own words. Never copy an answer from a friend, book, or website, even just half a sentence.

Missing Work and Extensions:

I have high expectations for all students, including turning in assignments on time. But I also know that problems inevitably arise over the course of the quarter. I have built in flexibility to accommodate illness and other problems:

- **In-Class Participation:** You can miss three classes with no penalty to your participation grade. I ask that you notify me if you will be absent from class.
- **Draft Assignments and Peer Evaluations:** If you require an extension for any of the draft assignments or peer evaluations, you may request an extension of up to seven days by going to <https://tinyurl.com/carianextension>. After filling out the form, your extension request is automatically granted. I may follow up if I need additional information; otherwise, you will not receive any confirmation.
- **Final Proposal:** I cannot accept late work for the final proposal, because I must submit your final grades on time. If you think you will have difficulty meeting the deadline for the final proposal, please let me know right away.

If you are experiencing a serious problem (e.g., severe personal illness or severe illness of a child/parent/etc) that will affect your participation for a large portion of the quarter, please let me or your TA know in office hours or by email.

Be Respectful and Inclusive:

I expect students to contribute to a respectful and inclusive learning environment with their actions and their words. As your instructor, I will strive to do the same. It is my intention that students from all backgrounds be well-served by this course. I hope you will help me do this, including by providing me with any suggestions or concerns.

Letters of Recommendation:

If you are considering asking me for a letter of recommendation for your application to graduate school or for a job, you should know that I can only write you a strong letter of recommendation if (1) you do well in my class (you earn a high grade, you turn work in on time, etc) and (2) we are able to get to know each other (because you come to office hours, etc). You can request I write you a letter of recommendation by going to <https://tinyurl.com/carianlor>. Submitting a request does not mean I will agree to write you a letter.

When asking me or any other professor for a letter of recommendation, make sure you do so well before the due date. Professors are busy with teaching and research, and will need to schedule time to write your letter. Personally, I require at least three weeks advance notice to have time to write and submit a letter. If you are applying to graduate school, you will need to submit to me a draft of your personal statement so I can learn more about why you are applying, so have that prepared in advance.

Resources to Help You Succeed

Your Advisor:

Each student will be paired with a faculty advisor in the Sociology department. Every advising relationship is different, and you should speak with your advisor about what support you require. They may be able to help you with your specific subject area, methods, setting deadlines, writing, and more. Your advisor is an essential resource for you, and it is important that you seek their advice, as they will also read and evaluate your final thesis in the spring quarter. You are expected to meet with your advisor at least three times in the fall quarter during (or close to) the following weeks and about the following topics:

- Week 3: Expectations for your advising relationship and your research question
- Week 6: Your proposed data and methods
- Week 10: Your plan for the winter quarter and how they can support you

Student Drop-In Hours:

I highly encourage you to attend student drop-in hours. You do not need an appointment to come to student drop-in hours; this is a time your TA and I set aside each week specifically to meet with you! During office hours, we can clarify anything that's confusing, talk about new topics, work on assignments, discuss graduate school in sociology and job paths, and more! See above for [the schedule](#) for student drop-in hours. I expect every student to come to office hours at least once.

Slack:

We'll use the messaging platform Slack during this class. Slack will allow us to communicate with each other and share resources quickly. You can download the Slack app (there's a mobile and desktop version), or you can run Slack through your web browser.

Email:

In addition to communicating with me and your TA during class, and student drop-in hours, you can contact us via email with questions or to notify us of a serious issue. To save both of us time, (1) check whether your question has been answered in the syllabus, assignment instructions, on Canvas, or on Slack, and (2) consider whether your question is best answered in-person or over email.

If it is appropriate to send me or your TA an email, please make sure to include in your subject line the class and reason for your email. For example: "SOCIOLOG 188A: Prolonged absences." While we make an effort to respond to student emails within 48 hours, it may take us longer. We cannot promise to respond to emails sent over the weekend until the following week. We may not respond if your question is answered in the syllabus, assignment instructions, or on Canvas.

Center for Excellence in Writing & Communication (and Extra Credit!):

The Writing Center offers appointments with writing specialists (50 minutes) and peer tutors (25 minutes). During your appointment, they will work with you to help you improve a specific piece of your writing, and your writing more generally. If you attend an appointment for any of the written assignments for this course, I will give you 3 extra credit points (10%!) toward your final proposal. (I will only give you extra credit once, though you are encouraged to visit the Writing Center more than once!) You can read about how to book an appointment at <https://www.writingcenter.uci.edu/appointments/appointments-for-undergraduates/>. As the writing center for a referral form that you can provide to me, showing that you attended an appointment.

Sociology Department Statistical Consultant:

The department's statistical consultant can provide you with advice about statistics, data, sources, research design, interpretation, and statistical software. Find out more at https://www.sociology.uci.edu/statistical_consultant.php.

UCI Libraries:

The UCI Libraries have lots of resources to help you with your research project. Beyond providing you with access to journal articles and books relevant to your project, the library also has guides on quantitative and qualitative software. These guides list various softwares (including paid and free ones). You can view those at <https://guides.lib.uci.edu/dataanalysis/dataanalysisishome>.

Apporto Virtual Computer Lab:

Apporto will allow you to run statistical software, including Stata, SPSS, and R Studio, using your web browser. Find out more at <https://www.oit.uci.edu/services/teaching-learning/labs/apporto/>.

Support for Students with Disabilities:

I am committed to making this course accessible for all students. If you require an accommodation to participate fully in this class, please contact The Disability Services Center (DSC). The DSC provides reasonable accommodations and connects students with other valuable campus resources. Accommodations are designed to remove barriers and ensure access to programs for all students with permanent or temporary disabilities. If you have any questions, please contact the DSC as soon as possible at 949-824-7494 or register online at www.dsc.uci.edu. Services are free and confidential.

Basic Needs:

If you are having trouble affording groceries, accessing sufficient food to eat every day, or if you lack a safe and stable place to live, I encourage you to contact the Basic Needs unit (fresh@uci.edu) or visit their website (<https://basicneeds.uci.edu/>). They can point you to resources.

Wellness, Health, and Counseling Services:

College can be stressful. Make sure you take care of your mental and emotional well-being.

There are many services available on campus to help you, including ones related to mental health, sexual assault, sexual harassment, and relationship violence. I encourage you to explore the services available to you at <https://whcs.uci.edu/>.

Frequently Asked Questions

Q: I can't make it to class. What should I do?

A: Email Professor Carian to let her know and check in with a buddy after class to catch up on what you missed.

Q: I am experiencing a serious problem that will affect my class participation for a large part of the quarter. What should I do?

A: Talk with Professor Carian and/or your TA in office hours or via email.

Q: I can't submit a draft assignment or peer evaluation by the deadline. What should I do?

A: You should fill out an extension form to request more time (up to seven days). Go to <https://tinyurl.com/carianextension> to fill out the form. If you are unsure of whether you need to fill out the form, go ahead and fill it out anyway. There will be no penalty for doing so. If you need an extension for a peer evaluation, please also notify the student whose work you are evaluating.

Q: How will I know if my extension request was granted?

A: When you submit your form, your request is automatically granted. If I need more information, I will contact you by email. Otherwise, you will not receive additional confirmation.

Q: What if I fill out an extension request but I don't submit our assignment within seven days?

A: You will receive a zero on the assignment.

Q: I don't think I will be able to submit my final proposal by the deadline. What should I do?

A: I cannot accept late work for the final proposal, because I must submit your final grades on time. If you think you will have difficulty meeting the deadline for the final proposal, please let me know right away.

Q: I have a question and I can't find the answer on the syllabus, instruction assignments, or on Canvas. What should I do?

A: If you have a general question, chances are another student has the same question, so please post it on our Slack rather than emailing us. This allows us to answer the question once, and lets all your classmates see the answer. If you have a personal question, email your TA or Professor Carian.

Course Schedule

Notes:

- This schedule is subject to change. Stay up-to-date using the most recent version of the syllabus on Canvas, under Syllabus.
- All readings and materials can be found on Canvas, under Modules.

Important Dates:

- September 30: Research topic and question due
- During or near the week of October 10: Meet with your advisor about expectations for your advising relationship and your research question
- October 17: Annotated bibliography due
- October 24: Literature review (for peer evaluation) due
- October 26: Peer evaluation of classmate's literature review due
- During or near the week of October 31: Meet with your advisor about your proposed data and methods and complete your CITI training
- November 2: Literature review (for instructor feedback) due
- November 7: Data and methods (for peer evaluation) due
- November 9: Peer evaluation of classmate's data and methods due
- November 16: Data and methods (for instructor feedback) due
- November 21: Introduction (for peer evaluation) due
- November 23: Peer evaluation of classmate's introduction due
- During or near the week of November 28: Meet with your advisor about your plan for the winter quarter and how they can support you
- November 30: Introduction (for instructor feedback) due
- December 5: Final proposal due and submit your IRB proposal if applicable

Step One: Developing Your Research Question	
Week 0	
Friday 9/23	<i>Welcome to our class! What research topics interest you?</i> Before class: Complete student survey After class: Read syllabus and complete syllabus quiz
Week 1	
Monday 9/26	<i>How do I find a research topic and question?</i> Read before: Mullaney and Rea 2022 p.19-26 of Chapter 1 of <u>Where Research Begins</u> (and if you're really unsure about your topic, complete the exercises on p.27-41)
Wednesday 9/28	<i>How do I find a research topic and question?</i> Read before: Booth et al 2016 Chapters 3 and 4 of <u>The Craft of Research</u>
Friday 9/30	<i>How do I find a research topic and question?</i> Submit before: Research topic and question for instructor feedback Bring to class: A printed copy of your research topic and question
Step Two: Finding Sources and Writing a Literature Review	
Week 2	
Monday 10/3	<i>How do I find and use sources? Library instruction</i> Read before: Booth et al 2016 Chapters 5 and 6 of <u>The Craft of Research</u>

Wednesday 10/5	<p><i>How do I write an annotated bibliography?</i> Read before: Laubepin 2013 How to Read a Social Science Journal Article <u>AND</u> One source (journal article) for your project Bring to class: The same source (journal article) for your project (electronic or printed)</p>
Friday 10/7	<p><i>How do I write an annotated bibliography?</i> Read before: A second source (journal article) for your project Bring to class: The second source (journal article) for your project (electronic or printed)</p>
Week 3	
Monday 10/10	<p><i>How do I write a literature review?</i> Read before: Booth et al 2016 Chapter 14 of <u>The Craft of Research</u></p>
Wednesday 10/12	<p><i>How do I write a literature review?</i></p>
Friday 10/14	<p>No class!</p>
By the end of this week...	<p>Schedule (and ideally have) a meeting with your advisor to discuss expectations for your advising relationship and your research question <u>AND</u> Locate and read 5-10 total sources for your annotated bibliography</p>
Week 4	
Monday 10/17	<p><i>How do I write a literature review?</i> Submit before: Annotated bibliography for instructor feedback Bring to class: A <u>single-sided</u> printed copy of your annotated bibliography</p>
Step Three: Designing Your Study	
Wednesday 10/19	<p><i>Which method is right for my question?</i> Read before: Wade 2022 Appendix B of <u>Terrible Magnificent Sociology</u> <u>AND</u> Firebaugh 2008 p.18-26 of Chapter 1 of <u>Seven Rules for Social Research</u></p>
Friday 10/21	<p><i>How do I conduct research ethically?</i></p>
Week 5	
Monday 10/24	<p><i>How do I provide constructive feedback on others' writing?</i> Read before: Becker 2007 Chapter 4 of <u>Writing for Social Scientists</u> <u>AND</u></p>

	<p>Professor Carian's Guide to Peer Evaluation Submit before: Literature review for peer evaluation</p>
Wednesday 10/26	<p><i>Where can I find existing data?</i> Submit before: Peer evaluation for classmate's literature review</p>
Friday 10/28	<p><i>Which method is right for my question? Panel with Barbara Pham, Canton Winter, and MacKenzie Christensen</i> Prepare before: Bring at least one question for our grad student panel</p>
By the end of this week...	<p>Complete the midterm feedback survey</p>
Week 6	
Monday 10/31	<p><i>How do I design a study with my chosen method?</i> Read before: <i>The introduction and data and method sections of...</i> <i>If you are using survey data:</i> South and Lei 2021 "Why are Fewer Young Adults Having Casual Sex?" <u>OR</u> <i>If you are using interviews/focus groups:</i> Carian 2022 "'No Seat at the Party': Mobilizing White Masculinity in the Men's Rights Movement" <u>OR</u> <i>If you are doing ethnography:</i> Baldor 2019 "No Girls Allowed?: Fluctuating Boundaries between Gay Men and Straight Women in Gay Public Space" <u>OR</u> <i>If you are doing content analysis/archival research:</i> Wade 2022 "Narratives of Outbreak and Survival in English-Language Cinema Prior to COVID-19" Prepare before: Come to class prepared to talk about the data and method you plan to use</p>
Wednesday 11/2	<p><i>How do I write my data and methods section?</i> Read before: <i>If you are using a qualitative method:</i> Umamaheswar and Tan 2020 "'Dad, Wash Your Hands': Gender, Care Work, and Attitudes toward Risk during the COVID-19 Pandemic" <u>OR</u> <i>If you are using a quantitative method:</i> Silva and Woody 2022 "Supernatural Sociology: Americans' Beliefs by Race/Ethnicity, Gender, and Education" Submit before: Literature review for instructor feedback</p>
Friday 11/4	<p><i>How do I write my data and methods section?</i> Bring to class: Any materials (sources, laptop) you need to work on your data and methods section</p>

By the end of this week...	Schedule (and ideally have) a meeting with your advisor to discuss your proposed data and methods AND Complete your CITI Training
Step Four: Writing Your Introduction	
Week 7	
Monday 11/7	<i>How do I write an introduction?</i> Read before: Booth et al 2016 Chapter 16 of The Craft of Research Submit before: Data and methods for peer evaluation
Wednesday 11/9	<i>How do I situate my research within the broader literature?</i> Read before: Firebaugh 2008 p.1-15 of Chapter 1 of Seven Rules for Social Research Submit before: Peer evaluation for classmate's data and methods
Friday 11/11	No class! Veteran's Day
Week 8	
Monday 11/14	<i>How do I write an introduction?</i> Read before: <i>The introduction for:</i> Winer et al 2022 "I Didn't Know Ace Was a Thing: Bisexuality and Pansexuality as Identity Pathways in Asexual Identity Formation" <u>AND</u> <i>The introduction for:</i> Ravenelle et al 2021 "The Side Hustle Safety Net: Precarious Worker and Gig Work during COVID-19" <u>AND</u> <i>The introduction for:</i> Jang et al 2021 "The Correlates of Panethnic Identification: Assessing Similarities and Differences among Latinos and Asians in the United States"
Wednesday 11/16	<i>How do I bring in my audience?</i> Submit before: Data and methods for instructor feedback
Friday 11/18	<i>How do I write an introduction?</i> Bring to class: Any materials (sources, laptop) you need to work on your introduction
Step Five: Planning for the Rest of the Year	
Week 9	
Monday 11/21	<i>What problems might I run into? Panel with Estéfani Marin, Cherry Ji, and Natalia González-Escobar</i> Submit before: Introduction for peer evaluation

	Prepare before: At least one question for our panelists
Wednesday 11/23	<i>How can I stay on track?</i> Submit before: Peer evaluation for classmate's introduction
Friday 11/25	No class! Thanksgiving
Week 10	
Monday 11/28	<i>What's next? Brief share-outs of our projects and plans for winter quarter</i> Prepare before: All this week, come prepared to talk about your project for ~5 minutes with the class
Wednesday 11/30	<i>What's next? Brief share-outs of our projects and plans for winter quarter</i> Submit before: Introduction for instructor feedback
Friday 12/2	<i>What's next? Brief share-outs of our projects and plans for winter quarter</i>
By the end of this week...	Schedule (and ideally have) a meeting with your advisor to discuss your plans for the winter quarter and how they can support you
Finals Week	
Monday 12/5, 12:30pm	Final proposal due AND Submit your IRB protocol if applicable