

**SOCIOLOGY 188BW:
Honors Research and Thesis
Spring 2023**

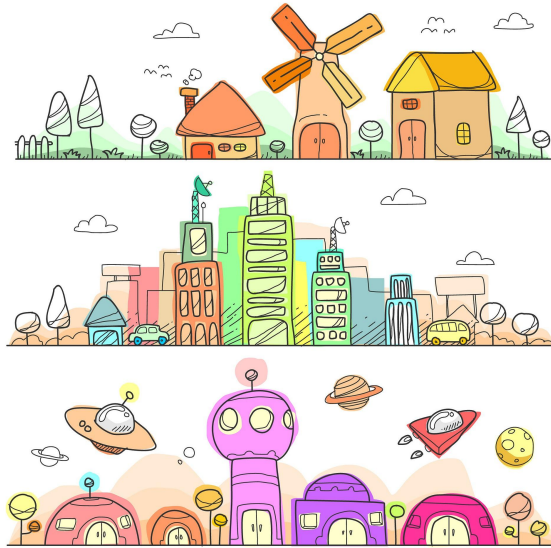


Table of Contents

Contact Information, Lecture Time/Place, and Student Drop-In Hours	2
Important Notes	2
Course Description and Objectives	3
Required Materials	3
Grading and Assignments	3
Class Policies and Expectations of Students	4
Resources to Help You Succeed	6
Frequently Asked Questions	7
Course Schedule	8

If you're looking at this syllabus online, you can click the headers above, then click the blue hyperlink to go directly to that section.

Contact Information, Lecture Time/Place, and Student Drop-In Hours

Instructor: Professor Emily K. Carian (she/her), cariane@uci.edu

Lecture Time/Place: Mondays, Wednesdays, and Fridays 11-11:50am in RH 188

Student Drop-In Hours: Mondays 1-2pm in SSPB 4231 and Wednesdays 2-3pm on Zoom (<https://uci.zoom.us/j/95432038119>), and by appointment

Important Notes

COVID-19

My first priority is your health. To protect our class, do not attend class if you are sick, think you might be sick, or think you might have been exposed to COVID. There are no exceptions to this rule. You will not be penalized for missing class due to illness and there is enough flexibility in this course's grading system so that you can still do well if you become ill. **Please do your part to keep us all safe and healthy by staying home if you are sick.**

As of this writing, face coverings are recommended indoors. **I request that you wear a mask in class and during drop-in student hours to protect your classmates and me.**

Tips for Succeeding in This Class

- **Come to class prepared!** Complete the assigned readings and be prepared to talk about them. Take notes or write down questions as you read. Check the course schedule (below) to know exactly what you need to do before class.
- **Ask questions!** When you don't understand something, ask in class or talk with a classmate or Professor Carian about it. I always want to see you in student drop-in hours.
- **Take charge of your research project!** Your success over the course of this year relies on you being able to complete work independently. You will have help—from me, your advisor, your classmates—but you are ultimately responsible for completing this research project. Create a plan for your project and stay accountable to it.
- **Work together!** Doing research doesn't have to be lonely. In this class, you will be organized into small groups based on your research interests. While everyone must complete their own work, helping each other is encouraged. This can take the form of checking in with each other on your progress, sharing helpful citations, reading each others' drafts, and more.
- **Be curious about Sociology!** Make connections between what we learn in class and your own life. Discuss career options with Professor Carian.

Course Description and Objectives

Sociology is the scientific study of how society is formed and operates, and how society and the individual are connected. Sociologists ask questions about the social world, rather than about individual personality or behavior (as psychologists do), the body or nature (as biologists do), or the structure and laws of physical matter (as chemists and physicists do). By the end of this year, you will have answered your own sociological research question through an independent research project, and will have communicated your findings in the form of a paper. This quarter, you'll analyze your data, write your findings and conclusion, and revise your thesis.

Upon successful completion of this course, you will be able to:

- Analyze data to answer a sociological research question
- Communicate your research findings through writing
- Revise your writing
- Provide constructive feedback on others' writing

Required Materials

Textbook:

There is no required textbook for this class.

Canvas:

This course will make use of the Canvas site for posting additional required readings, turning in assignments, keeping track of grades, and making announcements. Please make sure you are able to access Canvas and check the site frequently.

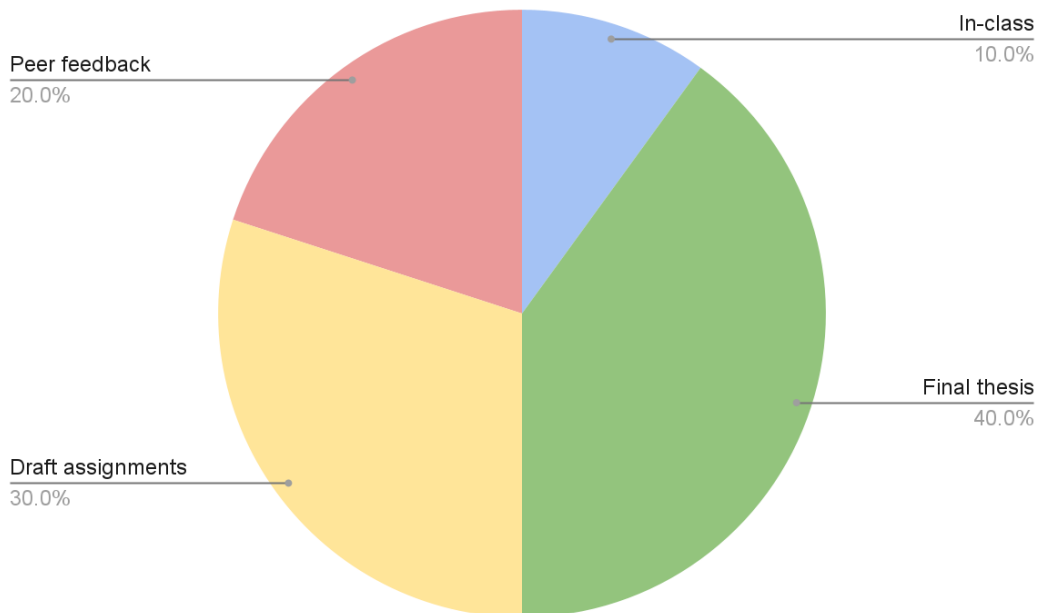
Slack:

We will be using the messaging platform Slack. Slack will allow us to communicate with each other and share resources quickly. You can download the Slack app (there's a mobile and desktop version), or you can run Slack through your web browser. You can join our Slack workspace by going to https://join.slack.com/t/sociologyhono-fl31737/shared_invite/zt-1fy4rmtty-cNPiLEF2Fw8YYTxVSfNXig

Grading and Assignments

You will be graded according to the following scale:

A+ = 97% and higher	C = 74-76%
A = 94-96%	C- = 70-73%
A- = 90-93%	D+ = 67-69%
B+ = 87-89%	D = 64-66%
B = 84-86%	D- = 59-63%
B- = 80-83%	F = 58% and lower
C+ = 77-79%	



In-Class Participation (10%):

This grade will be based on your attendance and your active participation in class, as well as your end-of-quarter presentation to the class. You are able to miss three classes with no penalty to your grade.

Final Thesis (40%):

At the end of the quarter, you will turn in your final thesis, consisting of an introduction, literature review, data and methods, findings, conclusion, and references. [Detailed instructions for the final thesis can be found here](#). The final thesis should incorporate all feedback from your classmates, Professor Carian, and your advisor. It is due on June 13 at 12:30pm on Canvas and via email (to Professor Carian and your advisor).

Draft Assignments (30%):

To facilitate your completion of the final proposal, you will turn in draft sections for feedback from your peers and from Professor Carian. Feedback will be based on the requirements and rubric outlined in the [thesis instructions](#). Draft assignments are graded based on completion. All draft assignments should be turned in via Canvas.

Peer Feedback (20%):

You will give and receive feedback from your classmates on draft assignments. Your grade for these assignments will be based on the quality of your feedback to your classmate. Peer feedback will be completed on Canvas.

Class Policies and Expectations of Students

Other Honors Requirements:

In addition to completing their thesis, Honors students are required to attend at least two research talks or colloquia. Students are encouraged to attend talks related to their Honors thesis and

hosted by the UCI Sociology department, although talks about research on any social issue may count toward this requirement. Students can consult Professor Carian if they are unsure about a talk's eligibility. Following their attendance at a research talk, students complete and submit a [short form](#) in which they briefly summarize the talk and its data and methods and identify one lesson learned that might inform or improve their Honors thesis project. The form should be submitted within seven days of attending the talk. Although attendance at only two talks is required, students are encouraged to attend more than two research talks.

Complete Your Own Work:

For assignments designated as independent work (e.g., your writing), I expect every student to complete their own work. Cheating and plagiarizing (claiming credit for someone else's ideas or words) are against [UCI's Academic Integrity Policy](#). Cheating and plagiarizing will reduce how much you learn and will earn you a failing grade in this class. Violations of academic integrity will be referred to the Office of Academic Integrity and Student Conduct.

Plagiarizing can be accidental, so be careful to avoid it! One common form of plagiarizing is taking a phrase or sentence someone else wrote (for example, from a textbook or website) and pretending it is your own. To avoid this, put the phrase or sentence in quotation marks ("...") and say who wrote it (in other words, cite it appropriately). To avoid plagiarizing, always use your own words. Never copy an answer from a friend, book, or website, even just half a sentence.

Missing Work and Extensions:

I have high expectations for all students, including turning in assignments on time. But I also know that problems inevitably arise over the course of the quarter. I have built in flexibility to accommodate illness and other problems:

- **In-Class Participation:** You can miss three classes with no penalty to your participation grade. I ask that you notify me if you will be absent from class.
- **Draft and Peer Feedback Assignments:** If you require an extension for any of the draft or peer feedback assignments, you may request an extension of up to seven days by going to <https://tinyurl.com/carianextension>. After filling out the form, your extension request is automatically granted. I may follow up if I need additional information; otherwise, you will not receive any confirmation.
- **Final Thesis:** I cannot accept late work for the final thesis, because I must submit your final grades on time and notify the university if you have passed "with honors." If you think you will have difficulty meeting the deadline for the final thesis, please let me know right away.

If you are experiencing a serious problem (e.g., severe personal illness or severe illness of a child/parent/etc) that will affect your participation for a large portion of the quarter, please let me know in student drop-in hours or by email. You do not need to let me know if you are experiencing a temporary problem; the flexibility I have built into the course should accommodate you.

Be Respectful and Inclusive:

I expect students to contribute to a respectful and inclusive learning environment with their actions and their words. As your instructor, I will strive to do the same. It is my intention that

students from all backgrounds be well-served by this course. I hope you will help me do this, including by providing me with any suggestions or concerns.

Letters of Recommendation:

If you are considering asking me for a letter of recommendation for your application to graduate school or for a job, you should know that I can only write you a strong letter of recommendation if (1) you do well in my class (you earn a high grade, you turn work in on time, etc) and (2) we are able to get to know each other (because you come to office hours, etc). You can request I write you a letter of recommendation by going to <https://tinyurl.com/carianlor>. Submitting a request does not mean I will agree to write you a letter.

When asking me or any other professor for a letter of recommendation, make sure you do so well before the due date. Professors are busy with teaching and research, and will need to schedule time to write your letter. Personally, I require at least three weeks advance notice to have time to write and submit a letter. If you are applying to graduate school, you will need to submit to me a draft of your personal statement so I can learn more about why you are applying, so have that prepared in advance.

Resources to Help You Succeed

Student Drop-In Hours:

I highly encourage you to attend student drop-in hours. You do not need an appointment to come to student drop-in hours; this is a time I set aside each week specifically to meet with you! During these times, we can clarify anything that's confusing, talk about new topics, work on assignments, discuss graduate school in sociology and job paths, and more! See above for [the schedule](#) for student drop-in hours.

Slack:

We'll use the messaging platform Slack during this class. Slack will allow us to communicate with each other and share resources quickly. You can download the Slack app (there's a mobile and desktop version), or you can run Slack through your web browser.

Email:

In addition to communicating with me during lecture, student drop-in hours, and on Slack, you can contact me via email with questions or to notify me of a serious issue. To save both of us time, (1) check whether your question has been answered in the syllabus, assignment instructions, or on Canvas, and (2) consider whether your question is best answered in-person or over email.

If it is appropriate to send me an email, please make sure to include in your subject line the class, discussion section, and reason for your email. For example: "SOCIOLOGY 188BW: Prolonged absences." While I make an effort to respond to student emails within 48 hours, it may take me longer. I cannot promise to respond to emails sent over the weekend until the following week. I may not respond if your question is answered in the syllabus, assignment instructions, or on Canvas. *Please use email rather than Canvas messages when communicating with me.*

Feedback on Your Assignments:

Your classmates and I will provide you with feedback on your assignments. It is essential that you take time to review this feedback to see what you did well and what you should improve for next time as you revise your thesis. Feedback on your written work can be viewed in Canvas. Click Grades, then find the assignment. If your classmate or I provided you with an overall comment, you can access it by clicking on the comment icon to the right of the assignment (circled in pink in [this picture](#)). You can see more detailed feedback by clicking on the name of the assignment, then View Feedback (circled in pink in [this picture](#)).

Center for Excellence in Writing & Communication (and Extra Credit!):

The Writing Center offers appointments with writing specialists (50 minutes) and peer tutors (25 minutes). During your appointment, they will work with you to help you improve a specific piece of your writing, and your writing more generally. If you attend an appointment for any of the written assignments for this course, I will give you 4 extra credit points (10%!) toward your final thesis. (I will only give you extra credit once, though you are encouraged to visit the Writing Center more than once!) You can read about how to book an appointment at <https://www.writingcenter.uci.edu/appointments/appointments-for-undergraduates/>. Ask the writing center for a referral form that you can provide to me, showing that you attended an appointment.

Sociology Department Statistical Consultant:

The department's statistical consultant can provide you with advice about statistics, data, sources, research design, interpretation, and statistical software. Find out more at https://www.sociology.uci.edu/statistical_consultant.php.

UCI Libraries:

The UCI Libraries have lots of resources to help you with your research project. Beyond providing you with access to journal articles and books relevant to your project, the library also has guides on quantitative and qualitative software. These guides list various softwares (including paid and free ones). You can view those at <https://guides.lib.uci.edu/dataanalysis/dataanalysishome>.

Apporto Virtual Computer Lab:

Apporto will allow you to run statistical software, including Stata, SPSS, and R Studio, using your web browser. Find out more at <https://www.oit.uci.edu/services/teaching-learning/labs/apporto/>.

Support for Students with Disabilities:

I am committed to making this course accessible for all students. If you require an accommodation to participate fully in this class, please contact The Disability Services Center (DSC). The DSC provides reasonable accommodations and connects students with other valuable campus resources. Accommodations are designed to remove barriers and ensure access to programs for all students with permanent or temporary disabilities. If you have any questions, please contact the DSC as soon as possible at 949-824-7494 or register online at www.dsc.uci.edu. Services are free and confidential.

Basic Needs:

If you are having trouble affording groceries, accessing sufficient food to eat every day, or if you lack a safe and stable place to live, I encourage you to contact the Basic Needs Center (basicneeds@uci.edu) or visit their website (<https://basicneeds.uci.edu/>). They can point you to resources.

Wellness, Health, and Counseling Services:

College can be stressful. Make sure you take care of your mental and emotional well-being. There are many services available on campus to help you, including ones related to mental health, sexual assault, sexual harassment, and relationship violence. I encourage you to explore the services available to you at <https://whcs.uci.edu/>.

Frequently Asked Questions

Absences and Missing Work

Q: I can't make it to class. What should I do?

A: Email Professor Carian to let her know and check in with a buddy after class to catch up on what you missed.

Q: I am experiencing a serious problem that will affect my class participation for a large part of the quarter. What should I do?

A: Talk with Professor Carian in student drop-in hours or via email.

Late Work

Q: I can't submit a draft or peer feedback assignment by the deadline. What should I do?

A: You should fill out an extension form to request more time (up to seven days). Go to <https://tinyurl.com/carianextension> to fill out the form. If you are unsure of whether you need to fill out the form, go ahead and fill it out anyway. There will be no penalty for doing so. If you need an extension for a peer feedback assignment, please also notify the student whose work you are evaluating.

Q: How will I know if my extension request was granted?

A: When you submit your form, your request is automatically granted. If I need more information, I will contact you by email. Otherwise, you will not receive additional confirmation.

Q: What if I fill out an extension request but I don't submit my assignment within seven days?

A: You will receive a zero on the assignment.

Q: I don't think I will be able to submit my final thesis by the deadline. What should I do?

A: I cannot accept late work for the final thesis, because I must submit your final grades on time and tell the university whether you passed "with honors." If you think you will have difficulty meeting the deadline for the final thesis, please let me know right away.

Miscellaneous

Q: I have a question and I can't find the answer on the syllabus, instruction assignments, or on Canvas. What should I do?

A: If you have a general question, chances are another student has the same question, so please post it on Slack rather than emailing me. This allows me to answer the question once, and lets all your classmates see the answer. If you have a personal question, email me.

Q: Are there any extra credit assignments?

A: You can attend a consultation with the Center for Excellence in Writing and Communication for extra credit toward your final thesis score. See [Resources to Help You Succeed](#) for more information.

Course Schedule

Notes:

- This schedule is subject to change. Stay up-to-date using the most recent version of the syllabus on Canvas, under Syllabus.
- All readings and materials can be found on Canvas, under Modules.
- While some days are explicitly designated as work days in the Course Schedule below, you should assume there may be time for you to work on your thesis in any given class period. Bring with you anything you need to do that (laptop, sources, data, etc) to make use of that time!

Important Dates:

- April 19: Findings outline due
- May 1, before class: Findings draft due
- May 15, before class: Introduction, literature review, and data and methods revision due
- May 22, before class: Conclusion draft due
- May 31, before class: Full draft due
- June 13, 12:30pm: Final thesis due

Step 1: Analyzing Your Data and Writing Your Findings	
Week 1	
Monday 4/3	<i>Welcome to Honors Research and Thesis! What is this class all about?</i> Before class: Complete the student survey After class: Read the syllabus AND Take the syllabus quiz
Wednesday 4/5	<i>How do I analyze my data?</i>
Friday 4/7	<i>How do I go from data to findings?</i> Read before: Booth et al. Chapter 7 and 8 of The Craft of Research
By the end of this week...	Schedule (and ideally have) a meeting with your advisor to discuss your progress, upcoming deadlines, and their personal expectations for your thesis
Week 2	
Monday 4/10	<i>How do I go from data to findings?</i>
Wednesday 4/12	<i>How do I support my findings with evidence?</i>

	Read before: Booth et al. Chapter 9 of <u>The Craft of Research</u>
Friday 4/14	<i>How do I support my findings with evidence?</i>
Week 3	
Monday 4/17	<i>How do I go from data to findings? How do I support my findings with evidence? In-class work day</i> Bring to class: Any materials (sources, laptop, data) you need to work on your findings outline
Wednesday 4/19	<i>How do I go from data to findings? How do I support my findings with evidence?</i> Submit before: Findings outline Bring to class: Three printed copies of your Findings outline
Friday 4/21	<i>How do I write my findings?</i>
Week 4	
Monday 4/24	<i>How do I write my findings?</i> Read before: <i>The abstract and findings sections of...</i> <i>If you are using survey data:</i> Dunatchik and Park 2022 “Racial and Ethnic Differences in Homework Time among US Teens” <u>OR</u> <i>If you are using interviews/focus groups:</i> Carian 2022 “‘No Seat at the Party’: Mobilizing White Masculinity in the Men’s Rights Movement” <u>OR</u> <i>If you are doing ethnography:</i> Rafalow 2018 “Disciplining Play: Digital Youth Culture as Capital at School” <u>OR</u> <i>If you are doing content analysis/archival research:</i> Einwohner and Rochford 2019 “After the March: Using Instagram to Perform and Sustain the Women’s March”
Wednesday 4/26	<i>How do I write my findings?</i> Bring to class: Any materials (sources, laptop, data) you need to work on your findings
Friday 4/28	<i>How do I write my findings? In-class work day</i> Bring to class: Any materials (sources, laptop, data) you need to work on your findings
Step 2: Revising Your Paper	
Week 5	
Monday 5/1	<i>How do I align the front end of my paper with my findings?</i> Submit before: Findings for peer and instructor feedback

	Bring to class: A copy (printed or digital) of your final proposal from fall quarter
Wednesday 5/3	<p><i>How do I write my findings? Peer feedback debrief + revision time</i></p> <p>Read before: Professor Carian's Guide to Peer Feedback</p> <p>Submit before: Peer feedback on classmate's findings</p> <p>Bring to class: Any materials (sources, laptop, data) you need to work on your findings</p>
Friday 5/5	<p><i>How do I align the front end of my paper with my findings?</i></p> <p>Read before: <i>The abstract, introduction, and literature review sections of...</i></p> <p><i>If you are using survey data:</i> Dunatchik and Park 2022 "Racial and Ethnic Differences in Homework Time among US Teens"</p> <p><u>OR</u></p> <p><i>If you are using interviews/focus groups:</i> Carian 2022 "No Seat at the Party': Mobilizing White Masculinity in the Men's Rights Movement"</p> <p><u>OR</u></p> <p><i>If you are doing ethnography:</i> Rafalow 2018 "Disciplining Play: Digital Youth Culture as Capital at School"</p> <p><u>OR</u></p> <p><i>If you are doing content analysis/archival research:</i> Einwohner and Rochford 2019 "After the March: Using Instagram to Perform and Sustain the Women's March"</p>
By the end of this week...	<p>Schedule (and ideally have) a meeting with your advisor to discuss your findings and your remaining writing and revisions</p> <p>Complete the midterm evaluation survey</p>
<u>Step 3: Writing Your Conclusion</u>	
Week 6	
Monday 5/8	<p><i>How do I write my conclusion?</i></p> <p>Read before: Booth et al 2016 Chapter 16 of The Craft of Research (p.245-247)</p>
Wednesday 5/10	<p><i>How do I write my conclusion?</i></p> <p>Read before: <i>The conclusion section of...</i></p> <p><i>If you are using survey data:</i> Dunatchik and Park 2022 "Racial and Ethnic Differences in Homework Time among US Teens"</p> <p><u>OR</u></p> <p><i>If you are using interviews/focus groups:</i> Carian 2022 "No Seat at the Party': Mobilizing White Masculinity in the Men's Rights Movement"</p> <p><u>OR</u></p> <p><i>If you are doing ethnography:</i> Rafalow 2018 "Disciplining Play: Digital Youth Culture as Capital at School"</p> <p><u>OR</u></p>

	<i>If you are doing content analysis/archival research:</i> Einwohner and Rochford 2019 “After the March: Using Instagram to Perform and Sustain the Women’s March”
Friday 5/12	<i>How do I align the front end of my paper with my findings? In-class work day</i> Bring to class: Any materials (sources, laptop, data) you need to work on your introduction, literature review, and data and methods revision
Week 7	
Monday 5/15	<i>How do I articulate my paper’s contribution?</i> Submit before: Introduction, literature review, and data and methods revision for peer and instructor feedback Recommended read before: Booth et al 2016 Chapter 4 of <u>The Craft of Research</u>
Wednesday 5/17	<i>How do I align the front end of my paper with my findings? Peer feedback debrief + revision time</i> Submit before: Peer feedback on classmate’s introduction, literature review, and data and methods revision
Friday 5/19	<i>How do I identify limitations in my research?</i>
Week 8	
Monday 5/22	<i>How do I write an abstract?</i> Submit before: Conclusion for peer and instructor feedback
Wednesday 5/24	<i>How do I write my conclusion? Peer feedback debrief + revision time</i> Submit before: Peer feedback on classmate’s conclusion
Friday 5/26	<i>How do I revise my thesis? In-class work day</i> Bring to class: Any materials (sources, laptop, data) you need to work on your thesis
Step 4: Presenting Your Work	
Week 9	
Monday 5/29	<i>No class! Memorial Day</i>
Wednesday 5/31	<i>How do I present my research? + Concluding our class</i> Submit before: Full thesis draft for peer feedback
Friday 6/2	<i>How do I present my research?</i> Bring to class: Any materials (sources, laptop, data) you need to work on your thesis and/or presentation

By the end of this week...	Schedule (and ideally have) a meeting with your advisor about completing your final thesis draft
Week 10	
Monday 6/5	<i>Sharing and celebrating your research! Presentations</i> Submit before: Peer feedback on classmate's full thesis draft
Wednesday 6/7	<i>Sharing and celebrating your research! Presentations</i>
Friday 6/9	<i>Sharing and celebrating your research! Presentations</i>
Finals Week	
Tuesday 6/13, 12:30pm	Final thesis due